

The 200Pig Per Day Abattoir Project Proposal



Qingdao Empire Machinery Co., Ltd (EME)

Address: #50 Suzhou Road Jiaozhou Qingdao City Shandong Province, China

Tel: +86 151 54298833/+86 158 70998833 (WhatsApp)

Website: www.eme-abattoir.com

Email: alex@eme-abattoir.com/sale01@eme-abattoir.com

I、Pig Abattoir Project Brief Introduce

1.1 Pig abattoir main data

- | | | | |
|---|--|-------|------------------------|
| 1). | Design capacity | ----- | 200Per shift |
| 2). | Pig abattoir plant out size (L*W*H) | ----- | 48000 * 1400 X*4500 MM |
| 3). | Deliver period in China | ----- | 30Days |
| (The delivery as per buyer' s down-payment value have been received in China) | | | |
| 4). | Installation and debugging technicians | ----- | 2Person |
| 5). | Installation and debugging period | ----- | 20Days |
| 6). | Pig carcass treatment way | ----- | De-Hair Only |
| 7). | Voltage rating | ----- | 380V / 3P / 50HZ |
| 8). | Scalding temperature | ----- | 58-62°C |
| 9). | Scalding time | ----- | 3-4Minutes |
| 10). | Electric consumption | ----- | 50Kw/Hour |
| 11). | Water consumption | ----- | 5-10Ton/Shift |
| 12). | Slaughterhouse Worker | ----- | 10-15Person/Shift |

1.2 Quality standard: the equipment are in compliance with the related ISO9001: 2008 standard

1.3 Deliver Items: FOB

- ✓ Loading port: Qingdao port of China

1.4 Transportation way: Complete pig abattoir equipment need one piece 40GP containers for transportation by sea

1.5 Packaging standard: original factory packaging loading in container

1.6 Payment way: the total invoice value will be payment as two time, the detail as following:

- ✓ The down-payment 40% of total invoice value will be payment within 10days from sale contract signature date through telegraphic transfer
- ✓ The rest 60% of total invoice value will be payment through telegraphic transfer before all equipment deliver from Qingdao port of China, meanwhile the seller party will invite buyer send one representative come to factory for equipment checking before loading into container for shipment

1.7 Quality guarantee: the quality guarantee period of all equipment are 12 months since the date when the installation and debug have been complete, the equipment are made available to buyer and signature is made on the buyer' s completed bill.

1.8 Machinery maintaining: The seller will appoint one well skilled technician go to maintain the equipment for five workdays for buyer per each 6 month within Quality Guarantee Period, the buyer charge the accommodation and round-trip air tickets of technician, the salary of technicians charge free.

1.9 Installation and debugging remark:

- ✓ The total quotation have include equipment installation and debugging direction salary and not include international round-trip air tickets、accommodation and transport cost of technicians in buyer country
- ✓ The installation & debugging time will be postponed caused by buyer which make equipment can' t installation in time, the buyer should payment salary to technicians \$100 us dollar per technicians per shift for postponed time

II、Pig abattoir equipment price list:

No.	Items	Model	Unit	Qty
2.1、Living pig killing and bleeding equipment unit				
1.1	Living pig stunning box	QE-P105	Set	1
1.2	Living pig manual stunning device	QE-P106-I	Set	1
1.3	Pig bleeding slope lifting machine	QE-P109-I	Set	1
1.4	Pig bleeding manual convey rail	QE-P110-III	M	15
1.5	Pig bleeding shackle	QE-P111	Set	10
1.6	Pulley hook	QE-P112	Set	10
1.7	Blood collection tank	QE-P113	Set	1
1.8	Carcass mechanical unloading device	QE-P115-I	Set	1
2.2、Pig carcass de-hairing and evisceration equipment unit				
2.1	Pig carcass processing manual convey rail(Dual orbit)	QE-P117-III	M	25
2.2	Dual orbit pulley hook	QE-P507	Set	30
2.3	Carcass fork	QE-P508	Set	30
2.4	Pig carcass electric scalding tank	QE-P201-I	Set	1
2.5	Pig carcass hydraulic dehairing machine	QE-P209-I	Set	1
2.6	Carcass hair trimming collection table	QE-P212	Set	1
2.7	Pig carcass slope lifting machine	QE-P401-I	Set	1
2.8	Carcass remnant hair scrapping platform	QE-P511-III	Set	1
2.9	Carcass white and red viscera evisceration platform	QE-P511-VI	Set	1
2.10	Carcass splitting platform	QE-P511-IX	Set	1
2.11	Carcass band splitting saw	QE-P502-II	Set	1
2.12	Carcass band splitting saw sterilizing	QE-P502-VI	Set	1
2.13	Carcass trimming platform	QE-P511-X	Set	1
2.14	Static track electronic weighing system	QE-P505-II	Set	1
2.15	Half carcass manual washing machine	QE-P504-I	Set	1
2.16	Grid type white viscera separate table	QE-C223-III	Set	1
2.17	Pig white viscera cleaning and inspection table	QE-C223-IV	Set	2
2.3、Pig carcass chilling and deboning equipment unit				
3.1	Pig carcass chilling and deboning manual convey rail(Dual orbit)	QE-P117-III	M	78
3.2	Dual orbit pulley hook	QE-P507	Set	120
3.3	Carcass fork	QE-P508	Set	120
3.4	Boneless table	QE-L102	Set	6
3.5	Trimming and packaging table	QE-L103	Set	1
3.6	Boneless knife	QE-L113-I	Pc	20
3.7	Knife sharper	QE-L113-II	Pc	20
3.8	Vacuum packaging machine (DZ-6)	QE-L116-I	Set	1
3.9	Standard trolley	QE-L123	Set	8
3.10	Hand washing and knife sterilizing device	QE-L202-I	Set	2
2.4、Pig abattoir installation material and auxiliary equipment unit				
4.1	Equipment main support and hanging material	QE-P703	Ton	8
4.2	Equipment installation suspension parts	QE-P704	Ton	2
4.3	Livestock abattoir installation tool	QE-L126	Ton	1

I、 The pig abattoir equipment specification:

2.1、 Living pig killing and bleeding equipment unit

1.1 Living pig stunning box-----1Set

Model: QE-P105

Which main used to fix living pig for stunning and killing, main data as following:

- 1)-Work pressure:0.6-0.8Mpa
- 2)-Air consume: 190L/ Time
- 3)-Max capacity: 100 Heads per hour
- 4)-Out size:1700*600*2000mm(L*W*H)
- 5)-Component and material:

- ✓ Pig entrance device
- ✓ Side door opening and closing device
- ✓ Pig collection grid plate
- ✓ Hot galvanized main frame
- ✓ High polymer nylon plate



1.2 Living pig manual stunning device-----1Set

Model: QE-P106-I

Which main used for small size abattoir pig stunning or combination with straddle-type conveyor stun machine, main data as following:

- 1)-Electric current: 0.5-1.2A
- 2)-Stunning time: 1~5s
- 3)-Out size: 220X130X340 (LXWXH)
- 4)-Component and material:

- ✓ Stainless steel stunning forceps
- Stunning generator



1.3 Pig bleeding slope lifting machine-----1Set

Model: QE-P109-I

Which main used to lifting pig carcass from killing table to carcass over head convey rail for bleeding, main data as following:

- 1)-Rated voltage / phase / frequency: 380v / 3p / 50hz
 - 2)-Power: 2.2Kw
 - 3)-Transport speed:17m/Min
 - 4)-Component and material:
- ✓ Hot galvanized #6.3/ #14 U-beam
 - ✓ Hot galvanized ϕ 60X4mm, PVC wear-resisting fillets
 - ✓ Hot galvanized chain plate, High strength composite nylon material Idler wheel
 - ✓ Precision casting iron rail hanger



1.4 Pig bleeding manual convey rail-----15M

Model: QE-P110-III

Which main used to hang pig carcass for complete bleeding with manual convey, main data as following:

- 1)-Rail Height:3.6m
 - 2)-Push block distance:600-800mm
 - 3)-Max capacity: 30 Heads/hour
 - 4)-Component and material:
- ✓ Hot galvanized 10# double channel steel
 - ✓ Hot galvanized 10# I-Beam



- ✓ Hot galvanized refined steel casting hanger
- ✓ Connecting bolt
- ✓ ϕ 60*4mm 304 stainless steel tube rail (tube rail)

1.5 Pig bleeding shackle-----10Sets

Model: QE-P111

Which main used to hang pig carcass one over head convey rail for bleeding, main data as following:

- 1)-Max load-bearing:500kg
- 2)-Material:304 stainless steel
- 3)-Length: 0.6-0.96mm



1.6 Pulley hook-----10Sets

Model: QE-P112

Which main used to hang pig carcass one over head convey rail for bleeding, evisceration, chilling, boneless and so on, main data as following:

- 1)-Width:450mm
- 2)- Max loading:400kg
- 3)-Component and material:
 - ✓ 304 stainless steel precision casting hanger
 - ✓ ϕ 18mm 304 stainless steel hooks



1.7 Blood collection tank-----1Set

Model: QE-P113

Which main used to collect pig blood for further treatment, main data as following:

- 1)-Out size:3700X1100X450-600mm
- 2)-Depth:200-350mm
- 3)-Component and material:
 - ✓ Stainless square steel 40X40X1.5mm
 - ✓ Stainless steel plate 2mm
 - ✓ Stainless steel adjusting feet M16X150mm



1.8 Carcass mechanical unloading device-----1Set

Model: QE-P115-I

Which main used to unloading pig carcass from over head convey rail to scalding tank, main data as following:

- 1)-Working distance: 170mm
- 2)-Out size: 415*500*1200mm(L*W*H)
- 3)-Component and material:
 - ✓ Hot galvanized main frame
 - ✓ Bleeding shackle guide device



2.2、 Pig carcass de-hairing and evisceration equipment unit

2.1 Pig carcass processing manual convey rail-----25M

Model: QE-P117-III

Which main used to hang pig carcass for evisceration, chilling, boneless and so on, main data as following:

- 1)-Rail Height:2700-3300m
- 2)-Push block distance:600-800mm
- 3)-Component and material:
 - ✓ Hot galvanized 10# double channel steel



- ✓ Hot galvanized 10# I-Beam
- ✓ Hot galvanized refined steel casting hanger
- ✓ Connecting bolt
- ✓ 40X40X4mm 304stainless steel dual rail (Dual orbit)

2.2 Dual rail pulley hook-----30Sets

Model: QE-P507

Which main used to hang pig carcass on over head convey rail for bleeding, evisceration, chilling, boneless and so on, main data as following:

- 1)-Max loading:300kg
- 2)-Distance:450mm
- 3)-Component and material:
 - ✓ 304 Stainless steel precision casting hanger
 - ✓ 2Pcs roller with sealed bearings
 - ✓ 304 Stainless steel hooks



2.3 Carcass fork-----30Sets

Model: QE-P508

Which main used to hang pig carcass and separate pig leg for treatment on over head convey rail for bleeding, evisceration, chilling, boneless and so on, main data as following:

- 1)-Max loading:300kg
- 2)-Distance:350-400mm
- 3)-Component and material:
 - ✓ Stainless steel



2.4 Pig carcass electric scalding tank -----1Set

Model: QE-P201-I

Which main used for pig carcass scalding before dehairing, main data as following:

- 1)-Working principle: electric
- 2)-Rated voltage / phase / frequency: 380v / 3p / 50hz
- 3)-Power: 30Kw
- 4)-Scalding temperature: 58-62℃
- 5)-Out size: 3000*1800*800mm(L*W*H)
- 6)-Component and material:
 - ✓ Stainless steel square steel main frame
 - ✓ 80mm polyurethane insulation layer
 - ✓ 2mm 304 Stainless steel plate shell
 - ✓ 30kw stainless steel electric heating rod
 - ✓ Drain valve
 - ✓ Temperature control system



2.5 Pig carcass hydraulic dehairing machine-----1Set

Model: QE-P209-I & QE-P209-II & QE-P209-III

Which main used to remove pig hair when after scalding, and main used in small and middle capacity pig slaughterhouse , main data as following:

- 1)-Rated voltage / phase / frequency: 380v / 3p / 50hz
- 2)-Power: 7Kw
- 3)-Out size: 2680*1340*1660mm(L*W*H)
- 4)-Capacity: 60pig per hour
- 5)-Dehairing time: 40s
- 6)-Loading weight: ≤130Kg



- 7)-Dehair effective length: 1.8m
- 8)-Dehairing rate: ≥ 90
- 9)-Bone broken rate: $\leq 2\%$
- 10)-Axis qty: 2sets
- 11)-Component and material:
 - ✓ Hot galvanized main frame
 - ✓ Hot galvanized single dehairing roller with rubber sheet
 - ✓ Hot galvanized concave-grid plate
 - ✓ Stainless steel raking
 - ✓ 2mm stainless steel plate shell
 - ✓ Hydraulic pressure station
 - ✓ Oil cylinder and hydraulic control system and soft pipe



2.6 Carcass hair trimming collection table-----1Set

Model: QE-P212

Which main used to collect dehaired pig carcass for hair trimming, main data as following:

- 1)-Out Size:1800*1500*800 mm(L*W*H)
- 2)-Component and material:
 - ✓ 38*38*2mm stainless square steel support
 - ✓ 2mm stainless steel table board
 - ✓ Stainless steel adjusting foot



2.7 Pig carcass slope lifting machine-----1Set

Model: QE-P401-I

Which main used to receive pig carcass after unloading from over head convey rail, main data as following:

- 1)-Rated voltage / phase / frequency: 380v / 3p / 50hz
- 2)-Power: 1.5kw
- 3)-Lifting height:1800mm
- 4)-Component and material:
 - ✓ Hot galvanized steel C-beam track
 - ✓ Hot galvanized steel nylon roller plate chain
 - ✓ High polymer wear-resistant walking wheel
 - ✓ Hot galvanized steel channel steel frame
 - ✓ Plate chain with push dog
 - ✓ Driving and tension device
 - ✓ Low pressure control switches
 - ✓ 40*40*4mm 304 stainless steel double rail (Dual orbit)

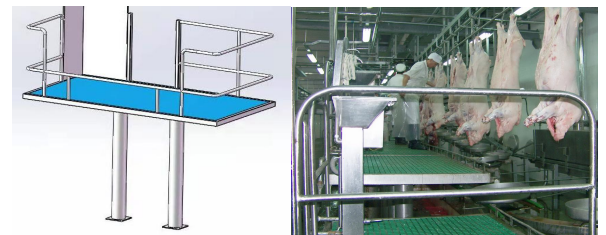


2.8 Carcass remnant hair scrapping platform-----1Set

Model: QE-P511-III

Which main used for staffs removing pig carcass remnant hair when after dehaired ,main data as following:

- 1)-Out size: 1600*800*1500mm (L*W*H)
- 2)-Component and material:
 - ✓ ϕ 159mm hot galvanized steel pipe support
 - ✓ 60*40*2mm hot galvanized steel frame
 - ✓ 25mm Anti-skid plastic square
 - ✓ 304Stainless steel ladder and handrail

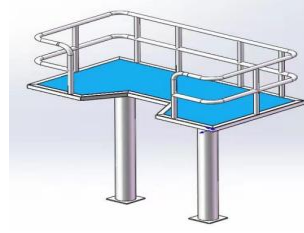


2.9 Carcass white viscera evisceration platform-----1Set

Model: QE-P511-VI

Which main used for staffs evisceration white viscera from pig carcass ,main data as following:

- 1)-Out size: 1600*800*800mm (L*W*H)
- 2)-Component and material:
 - ✓ ϕ 159mm hot galvanized steel pipe support
 - ✓ 60*40*2mm hot galvanized steel frame
 - ✓ 25mm Anti-skid plastic square
 - ✓ 304Stainless steel ladder and handrail

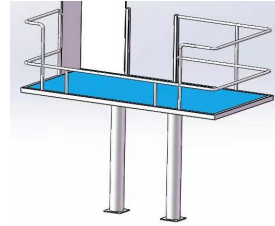


2.10 Carcass splitting platform-----1Set

Model: QE-P511-IX

Which main used for staffs to cutting complete carcass into half part ,main data as following:

- 1)-Out size: 1600*800*800mm (L*W*H)
- 2)-Component and material:
 - ✓ ϕ 159mm hot galvanized steel pipe support
 - ✓ 60*40*2mm hot galvanized steel frame
 - ✓ 25mm Anti-skid plastic square
 - ✓ 304Stainless steel ladder and handrail

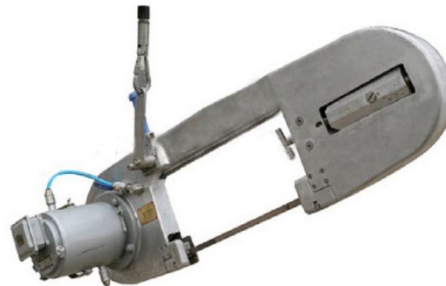


2.11 Carcass band splitting saw-----1Set

Model: QE-P502-II (ORIGINAL: CHINA)

Which main used to cut pig carcass into half parts, main data as following:

- 1)-Rated voltage / phase / frequency: 380v / 3p / 50hz
- 2)-Power: 2.2kw
- 3)-Capacity: 400Pig per hour
- 4)-Blade length:2790mm
- 5)-Cutting depth: 360mm
- 6)-Weight:68kg
- 7)-Component and material:
 - ✓ Balance
 - ✓ Transformer
 - ✓ 10pcs saw blade

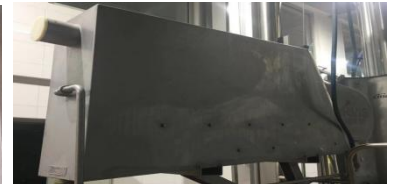
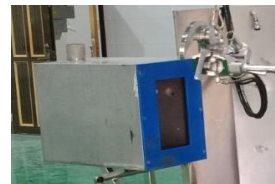


2.12 Carcass band splitting saw sterilizing-----1Set

Model: QE-P502-VI

Which main used for pig carcass band splitting saw sterilizing with hot water, main data as following:

- 1)-Size:800X240X920mm(LXWXH)
- 2)-Material: stainless steel

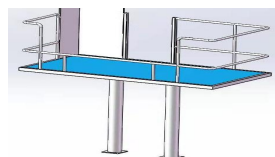


2.13 Carcass trimming platform-----1Set

Model: QE-P511-X

Which main used for staffs to trim pig carcass before send to market or storage room ,main data as following:

- 1)-Out size: 1600*800*800mm (L*W*H)
- 2)-Component and material:
 - ✓ ϕ 159mm hot galvanized steel pipe support
 - ✓ 60*40*2mm hot galvanized steel frame
 - ✓ 25mm Anti-skid plastic square
 - ✓ 304Stainless steel ladder and handrail



2.14 Static track electronic weighing system-----1Set

Model: QE-P505-II

Which is used to weight pig carcass and installation on over head convey rail, the detail data as following:

- 1)-Weight rail length: 1000 mm
- 2)-Maximum Weight: 300 Kg
- 3)-Differentiate Capacity: 50g
- 4)-Component and material:
 - ✓ Hot galvanized connectors and bolts
 - ✓ 2pcs high precision sensors
 - ✓ Weighing display with printer
 - ✓ LCD digital display
 - ✓ 40*40*4mm independent 304 stainless steel weighing rail (Dual orbit)



2.15 Half carcass manual washing machine-----1Set

Model: QE-P504-I

Which is used to cleaning pig half carcass by high pressure water, the detail data as following:

- 1)-Power mode:3-phase electric
- 2)-Include:15m high pressure explosion-proof steel wire pipe
 - ✓ Copper tube high pressure gun
 - ✓ High density filter
 - ✓ 5m water inlet PVC pipe
- 3)-Technical parameters:
 - ✓ Power: 2.2Kw
 - ✓ Rate of flow: 13L/Min
 - ✓ Max pressure:18Mpa Power mode:3-phase electric
- 4)-Include:15m high pressure explosion-proof steel wire pipe
 - ✓ Copper tube high pressure gun
 - ✓ High density filter
 - ✓ 5m water inlet PVC pipe
- 5)-Technical parameters:
 - ✓ Power: 2.2Kw
 - ✓ Rate of flow: 13L/Min
 - ✓ Max pressure:18Mpa



2.16 Grid type white viscera separate table-----1Set

Model: QE-C223-III

Which main used to collection white viscera and separate each other, the detail data as following:

- 1)-Out size: 2400X1000X800mm(LXWXH)
- 2)-Deep:200mm
- 3)-Component and material:
 - ✓ 38*38*2mm stainless steel square pipe
 - ✓ stainless steel table-board
 - ✓ Drain hole
 - ✓ stainless steel adjusting foot



2.17 Pig white viscera cleaning and inspection table-----2Sets

Model: QE-C223-IV

Which main used to collection cattle white viscera from convey machine for cleaning and inspection, the detail data as following:

- 1)-Out size: 1500X1000X900mm(LXWXH)
- 2)-Deep:100mm
- 3)-Component and material:
 - ✓ 38*38*2mm stainless steel square pipe



- ✓ stainless steel table-board
- ✓ Drain hole
- ✓ stainless steel adjusting foot

2.3、 Pig carcass chilling and deboning equipment unit

3.1 Pig carcass processing manual convey rail-----78M

Model: QE-P117-III

Which main used to hang pig carcass for chilling and boneless and so on, main data as following:

- 1)-Rail Height:2700-3300m
- 2)-Push block distance:600-800mm
- 3)-Component and material:
 - ✓ Hot galvanized 10# double channel steel
 - ✓ Hot galvanized 10# I-Beam
 - ✓ Hot galvanized refined steel casting hanger
 - ✓ Connecting bolt
 - ✓ 40X40X4mm 304stainless steel dual rail (Dual orbit)



3.2 Dual rail pulley hook-----120Sets

Model: QE-P507

Which main used to hang pig carcass on over head convey rail for bleeding, evisceration, chilling, boneless and so on, main data as following:

- 4)-Max loading:300kg
- 5)-Distance:450mm
- 6)-Component and material:
 - ✓ 304 Stainless steel precision casting hanger
 - ✓ 2Pcs roller with sealed bearings
 - ✓ 304 Stainless steel hooks



3.3 Carcass fork-----120Sets

Model: QE-P508

Which main used to hang pig carcass and separate pig leg for treatment on over head convey rail for bleeding, evisceration, chilling, boneless and so on, main data as following:

- 4)-Max loading:300kg
- 5)-Distance:350-400mm
- 6)-Component and material:
 - ✓ Stainless steel



3.4 Boneless table-----6Sets

Model: QE-L102

Which main used to for beef、 mutton、 pork、 chicken meat boneless, main data as following:

- 1)-Out size: 900X600X800mm (LXWXH)
- 2)-Component and material:
 - ✓ 38*38*2mm 304Stainless steel square tube
 - ✓ 20mmwhite high polymer nylon board
 - ✓ Reservoir at the bottom
 - ✓ 304Stainless steel adjusting foot



3.5 Trimming and packaging table-----1Set

Model: QE-L103

Which main used to for beef、 mutton、 pork、 chicken meat trimming and packaging, main data as following:

3)-Out size: 1800X900X800mm (LXWXH)

4)-Component and material:

- ✓ 38*38*2mm 304Stainless steel square tube
- ✓ 1.5mm 304Stainless steel table-board
- ✓ Reservoir at the bottom
- ✓ 304Stainless steel adjusting foot



EME-MACHINERY.COM

3.6 Boneless knife-----20Sets

Model: QE-L113-I

Which main used to skinning, trimming and boneless, main data as following:

- 1)-Length:26.2-31cm
- 2)-Component and material:
 - ✓ 304Stainless steel
 - ✓ Food grade plastic handle



3.7 Knife sharper-----20Sets

Model: QE-L113-II

Which main used for knives sharpening, main data as following:

- 1)-Length:45cm
- 2)-Component and material:
 - ✓ 304Stainless steel
 - ✓ Food grade plastic handle



3.8 Vacuum packaging machine (DZ-6)-----1Set

Model: QE-L116-I

Which main used to pack livestock meat for freezing storage and keep fresh , main data as following:

- 1)-Rated voltage/phase/frequency: 380V/3P/50HZ
- 2)-Power:2.2Kw
- 3)-Max packing size:600X550mm
- 4)-Vacuum room size: 720*625*140mm(L*W*H)
- 5)-Seal: 600*(8-10)*4mm
- 6)-Capacity: 1000-1500Pcs per hour
- 7)-Out size: 1420*750*950mm
- 8)-Component and material:
 - ✓ Stainless steel frame and vacuum cover
 - ✓ High quality vacuum pump
 - ✓ Intelligent control panel



EME-MACHINERY.COM

3.9 Standard trolley-----8Sets

Model: QE-L123

Which main used to collect livestock by-product and meat transfer to appoint area for treat or storage, main data as following:

- 1)-Volume:200L
- 2)-Out size: 600X600X600mm(LXWXH)
- 3)-Component and material:
 - ✓ 2mm 304Stainless steel tank
 - ✓ Bottom fillet structure
 - ✓ 4pcs Strongly nylon wheel



3.10 Hand washing and knife sterilizing device-----2Sets

Model: QE-L202-I

Which main used to clean hand and knives sterilizing, main data as following:

- 1)-Heating type:Steam heating

- 2)-Operate type: Foot switch
- 3)-Knives sterilizing water temperature: 82°C
- 4)-Component and material:
 - ✓ 2mm stainless steel shell
 - ✓ High quality tap
 - ✓ Water supply interface and drain valve
 - ✓ Rotary thermostat



2.4、 Pig abattoir installation material and auxiliary equipment unit

4.1 Equipment main support and hanging material-----8Tons

Model: QE-P703

Which main used for pig abattoir equipment main beam support and hanging, fixed on the upper end of the column by welding, main data as following:

1)-Component and material:

- ✓ DN114 Hot galvanized steel column
- ✓ Hot Galvanized Main Steel Beam
- ✓ 25# I-beam,250*118*10
- ✓ 20# I-beam,200*102*9
- ✓ 18# I-beam,180*102*9
- ✓ 16# I-beam,160*102*9



4.2 Equipment main support and hanging material-----2Tons

Model: QE-P704

Which main used for pig abattoir equipment main beam support and hanging, fixed on the upper end of the column by welding, main data as following:

1)-Component and material:

- ✓ Hot galvanized rigid Connectors
- ✓ Hot galvanized connecting Plate
- ✓ Hot galvanized connecting screw
- ✓ Hot galvanized bolt and nut
- ✓ Expansion bolt



4.3 Livestock abattoir installation tools-----1Set

Model: QE-L126

Which main use for cattle and sheep/goat and pig and poultry abattoir slaughtering equipment installation, and which mainly include following device:

- 1)-Welding Machine
- 2)-Steel Cutting Device
- 3)-Rotate Drilling Device
- 4)-Manual Lifting Device
- 5)-Welding Polishing Device
- 6)-False-work
- And so on.....

